

SCHNELLER

Contact



Schneller Americas

Schneller LLC
6019 Powdermill Road
Kent, Ohio 44240 USA
Ph. 330.673.1400
Fax: 330.673.6374
Email: americas@schneller.com



Schneller Europe

Schneller Sarl
29 Rue du Louvre
75002 Paris, France
Ph. (33) 1.53.34.90.80
Fax: (33) 1.53.34.90.89
Email: europe@schneller.com



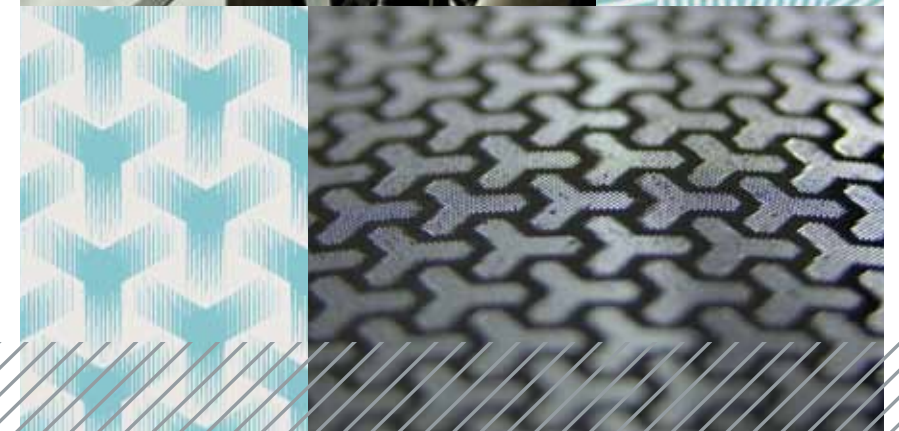
Schneller Asia

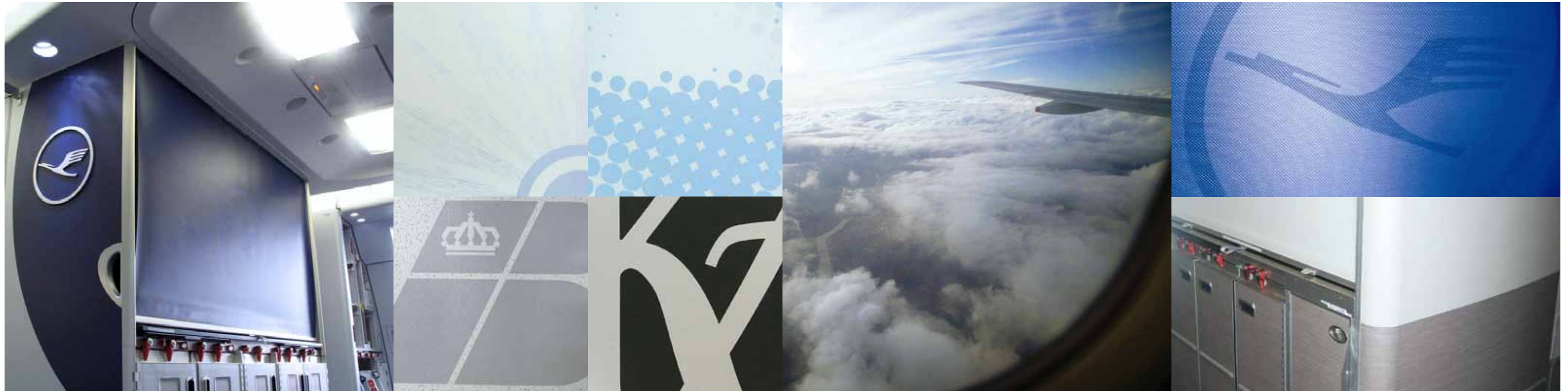
Schneller Asia Pte. Ltd.
19 Loyang Way #03-01
Changi Logistic Centre
Singapore 508724
Ph. (65) 65.46.2272
Fax: (65) 65.45.2272
Email: asia@schneller.com

Schneller is the premier single source provider of coordinated collections and custom decor of **film** and **reinforced laminates**, **thermoplastic sheets** and **non-textile floor coverings** designed to meet the exacting requirements of our customers in the aviation and ground transportation industries. We provide continuous roll and sheet production from our ISO9001:2008 and AS9100C certified production facility. From our innovative materials to complete solutions, from advanced engineering to inspiring motifs, from localized knowledge to worldwide service, everything we do is designed to deliver superior aesthetics, performance and results. For further information on Schneller's products and services, please visit our website at www.schneller.com.

AerScreen™

Decorative Film Laminates





AerScreen™ is a tough, but flexible decorative laminate developed by Schneller for innovative retractable screens in aircraft galley housings, rail car applications, and special displays. AerScreen can cover up a utility area or display a brand image and yet allow soft back lighting to show through.

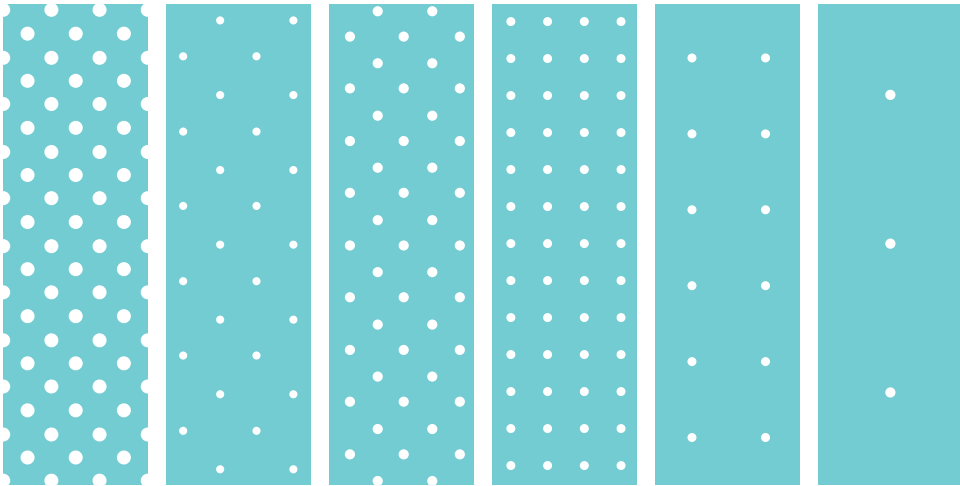
Product Specifications

- Construction meets BMS8-141H
- Typical size - pressed sheet - up to 60 x 120 inches (1.52 x 3.05 meters).
- Flame retardant - complies with 14 CFR 25.853 (a), 60 second vertical burn.



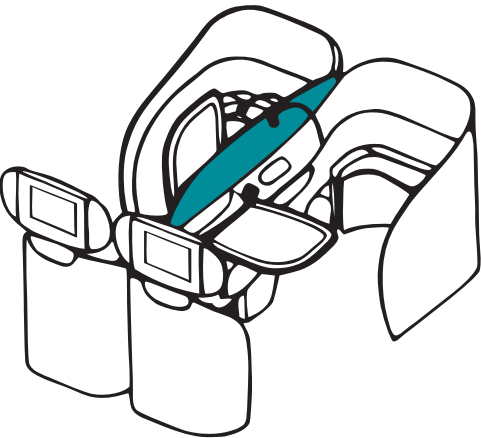
Product Features

- Optimum Printability - Choice of standard or digital printing process.
- Custom Emboss Textures - Texture-like appearance with scratch resistant surfaces.
- Flexibility/Durability - Recoils smoothly without creasing, cracking or tearing.
- Cleanable and stain resistant for low maintenance and long life.



Possible Applications

- Aircraft galley housings
- Railcar applications
- Speciality displays



 AerScreen™

